



CORPORATE PROFILE

iGAS Technology Solutions Ltd.
Unit 1a & 1c
Douglas Drive, Catteshall Lane
Godalming
Surrey
GU7 1JX
Head Office: +44 (0)1483 268 269
Fax: +44 (0)1483 268 368



We are World Leaders in the innovative design, engineering and delivery of technical solutions to the Industrial Gases & Clean Energy sectors, providing guaranteed, risk-free solutions to maximise return on investment for our customers.

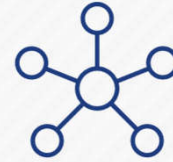


iGAS Technology Solutions Limited

An Employee Owner
(EOT) Business since
August 2023



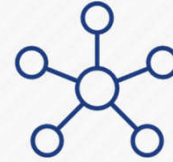
450+ satisfied clients



IGPH Member



1000+ projects



BCGA member



170+ projects p/a



Service Charter



75 + Countries



ISO9001: 2015



Industry Expertise



Low staff turnover

- AiFill G2 technology lead solutions
- Cylinder package filling
- Trailer filling
- Repeat solutions
- Package with clear battery limits
- Installation Specifications

What do majority (>75%) of Projects look like:



- Bespoke process
- FEED studies
 - De-risks onward project
 - PFD, P&IDS, draft VEIS, draft layout, investment summary
 - HAZOPs for more complicated
- Partner with a local installation companies (and for design)

What do minority (<25%) of Projects look like



- Dedicated resource
- Offer before project close and clarity on timings
- Value added
- Maintain as-built documents

Support Contracts



- (see Support Contracts)
- Strategic holding (including consignment stock)
- Offer early on in project
- In place prior to commissioning

Spares





Industrial Gas Cylinder Filling



Medical Gas Cylinder Filling



H2/He Load & Offload Solutions



Mobile Gas Solutions



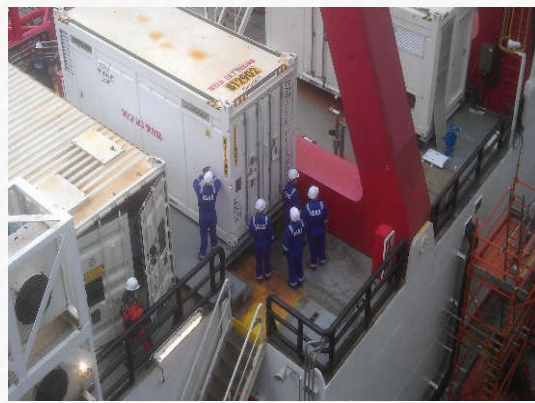
Speciality Gas Cylinder Filling



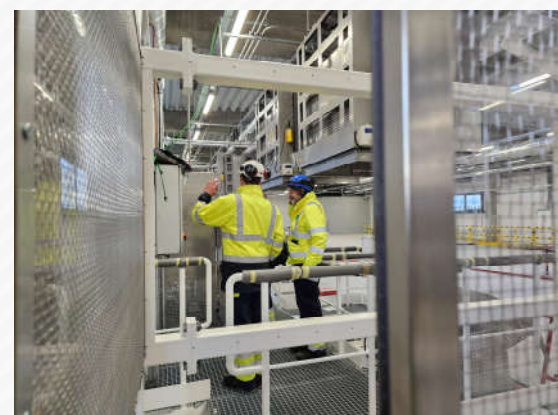
Gas Generation & Distribution



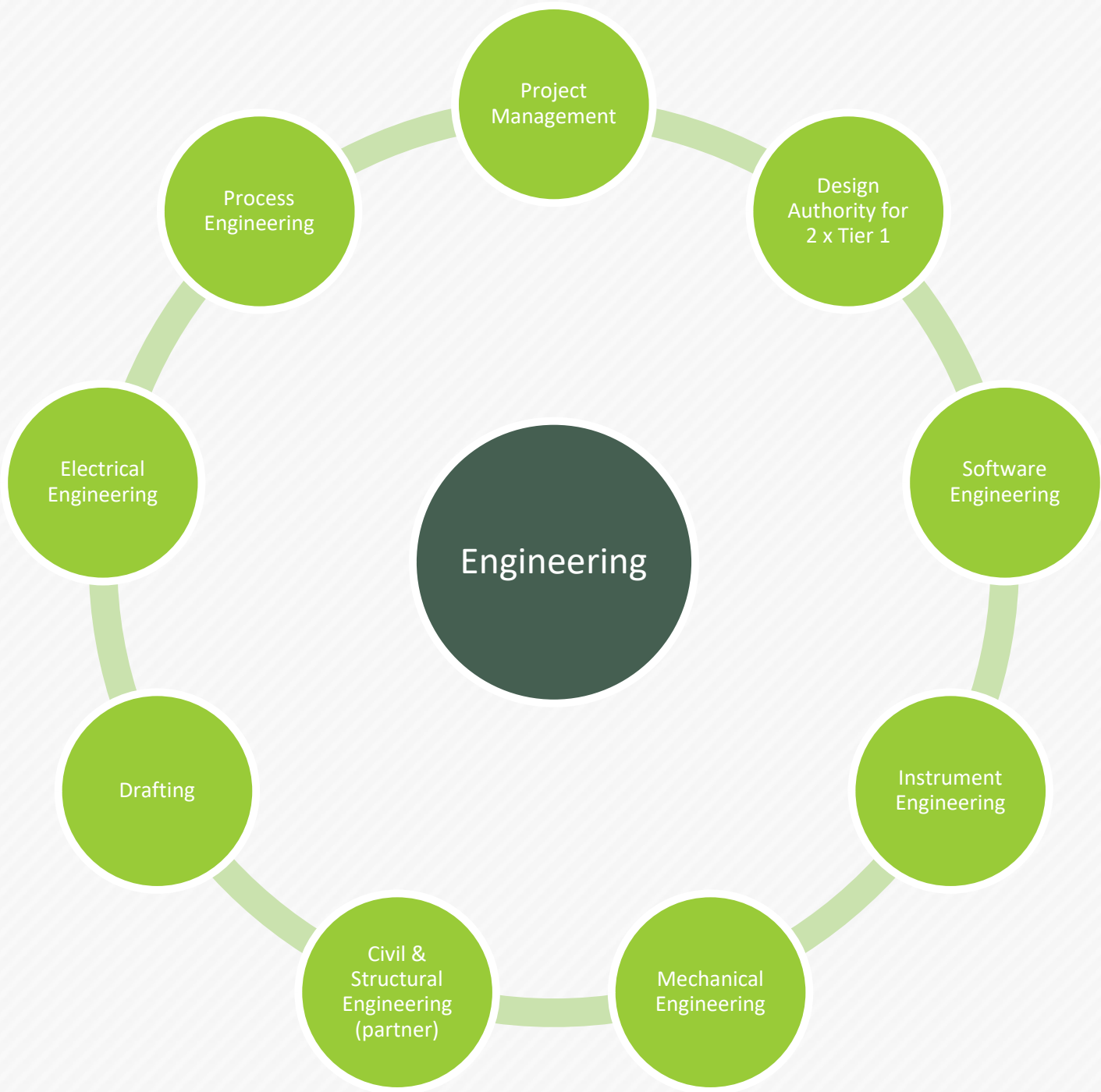
Bespoke Gas Solutions



Offshore Solutions



Engineering Services



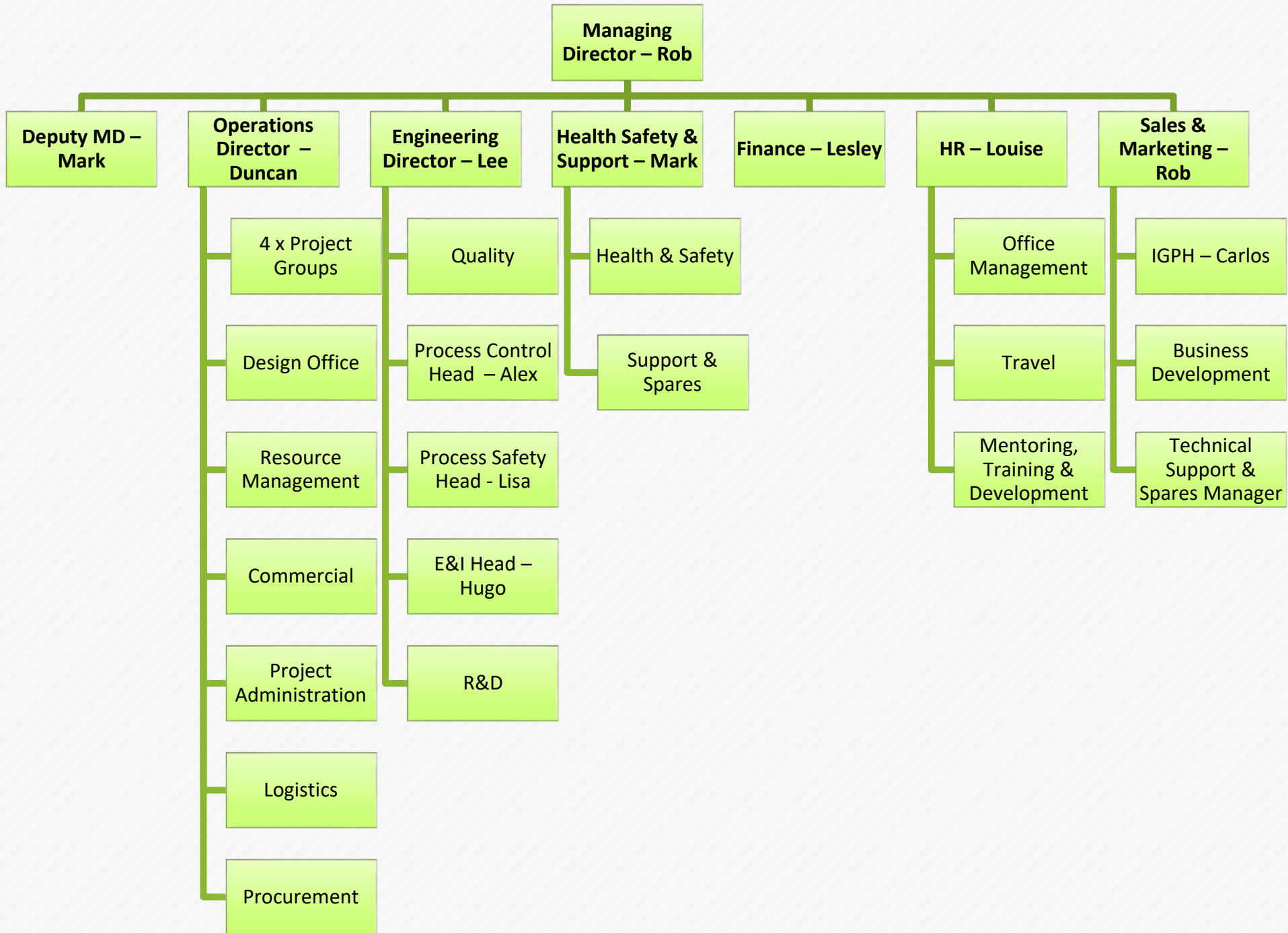
**UK, Europe &
Scandinavia**

**Middle East (UAE,
KSA, Oman, Qatar,
Bahrain, Kuwait)**

**Mexico & Central
America**

**Consider other
countries which
have a compelling
case**

- Tier 1 Gas Companies
- Tier 2 Gas Companies
- OEM/End Users of Gas
- Clean Energy Companies
- IGPH (Key Group partners) – iGAS, Mtech, Krytem, Aerflex, Polo





The basis of our relationship

To be effective, we believe that professional relationships need to be based on

- ✓ mutual trust
- ✓ mutual respect
- ✓ mutual support
- ✓ mutual integrity

As a result, it's important to us that our clients share these values.

In practice that means that:

We aim to...

Do everything possible to:

- Keep you fully informed about what's happening on your projects/orders, and complete every task on or ahead of time - so that you never have to prompt us
- Operate on the principle that a problem isn't solved, or a piece of work finished, until you are 100% satisfied
- Reply to every telephone message the day you call us
- Reply to (or at least acknowledge) every letter or email on the day we receive it
- Maintain the high standards of integrity, honesty, openness, professionalism, and confidentiality that you rightly expect from us
- Refer our contacts to you where we believe they could benefit your products and services
- Always be on the lookout for new ideas that could help you to build an even more successful business and achieve your business goals
- Do what we say we are going to do, when we say we are going to do it

You aim to...

Do everything possible to:

- Maintain the high standards of integrity, honesty and openness that we rightly expect from each other
- Tell us immediately if we do anything that you are unhappy with
- Do the things on your action plan – including providing us with any information and answers we need to carry out our work - within the mutually agreed timescales for those action points
- Pay us according to the timetable we agree on in advance
- Refer your internal contacts to us where you believe they could benefit from our help



Projects

Cryogenic
Equipment

Filling
Equipment

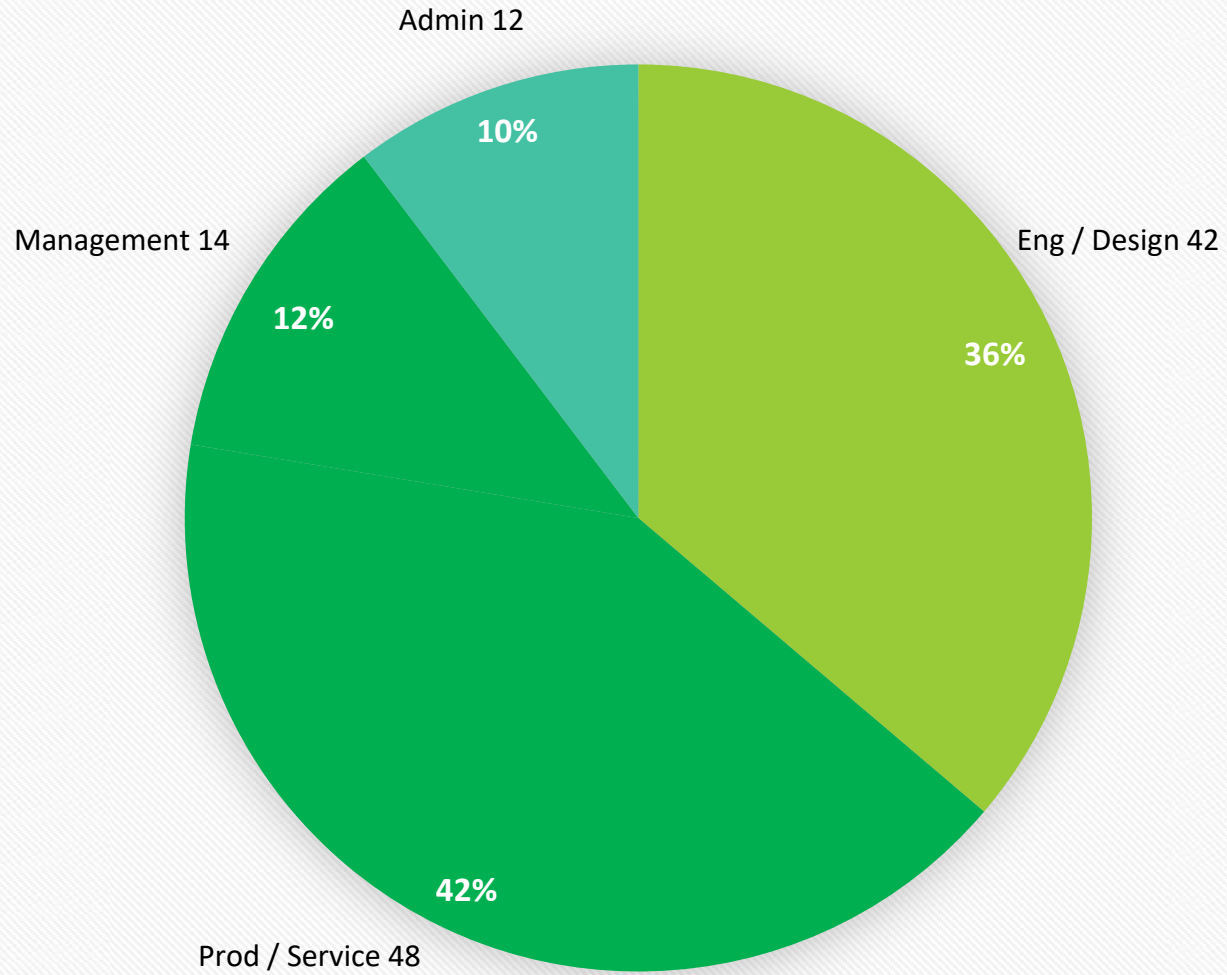
Hoses &
Connectors

Refrigerant
Equipment



IGPH INDUSTRIAL
GAS
PROJECTS
HOUSE

IGPH Group Resource



■ Engineering & Design ■ Production / Service ■ Management* ■ Admin

- Proven Track Record in global Solutions delivery
- Experienced Team
- Gases Expertise (Operations & Projects)
- Client Partnering
- Turnkey or Part-Turnkey
- Factory Testing Methodology, 'plug & play'
- High quality, proven technology