

## Mono Gas Cylinder Filling Module

### Description:

Semi-automatic cylinder filling module incorporating automatic valves, dual fill/vent/vacuum facility, integral vacuum system, fine fill proportional filling arrangement, dual pressure filling and *AiFill* control system.

### Features:

- Inert or Oxygen inlet gas – specify on order
- 420 bar design
- Settled pressures to 300 bar
- Dual pressure filling
- Pressure / temperature compensated filling technique, control system managed.
- Integral vacuum system
- Cleaned for O2 service
- Adiabatic shock tested valves for O2 service (Mtech MPG range)
- Integral Control System with HMI, multi language and remote support facility.
- Factory tested ready for installation / hook up
- Dual fill/cylinder preparation feature
- Floor standing skid in steel and painted finish



### Options:

- No vacuum system
- Flammable filling

For further details please contact Ian Davies at [idavies@igph.net](mailto:idavies@igph.net) or visit our website at [www.igph.net](http://www.igph.net)



[www.aeroflex.co.uk](http://www.aeroflex.co.uk)



[www.filltech.de](http://www.filltech.de)



[www.igas-ts.com](http://www.igas-ts.com)

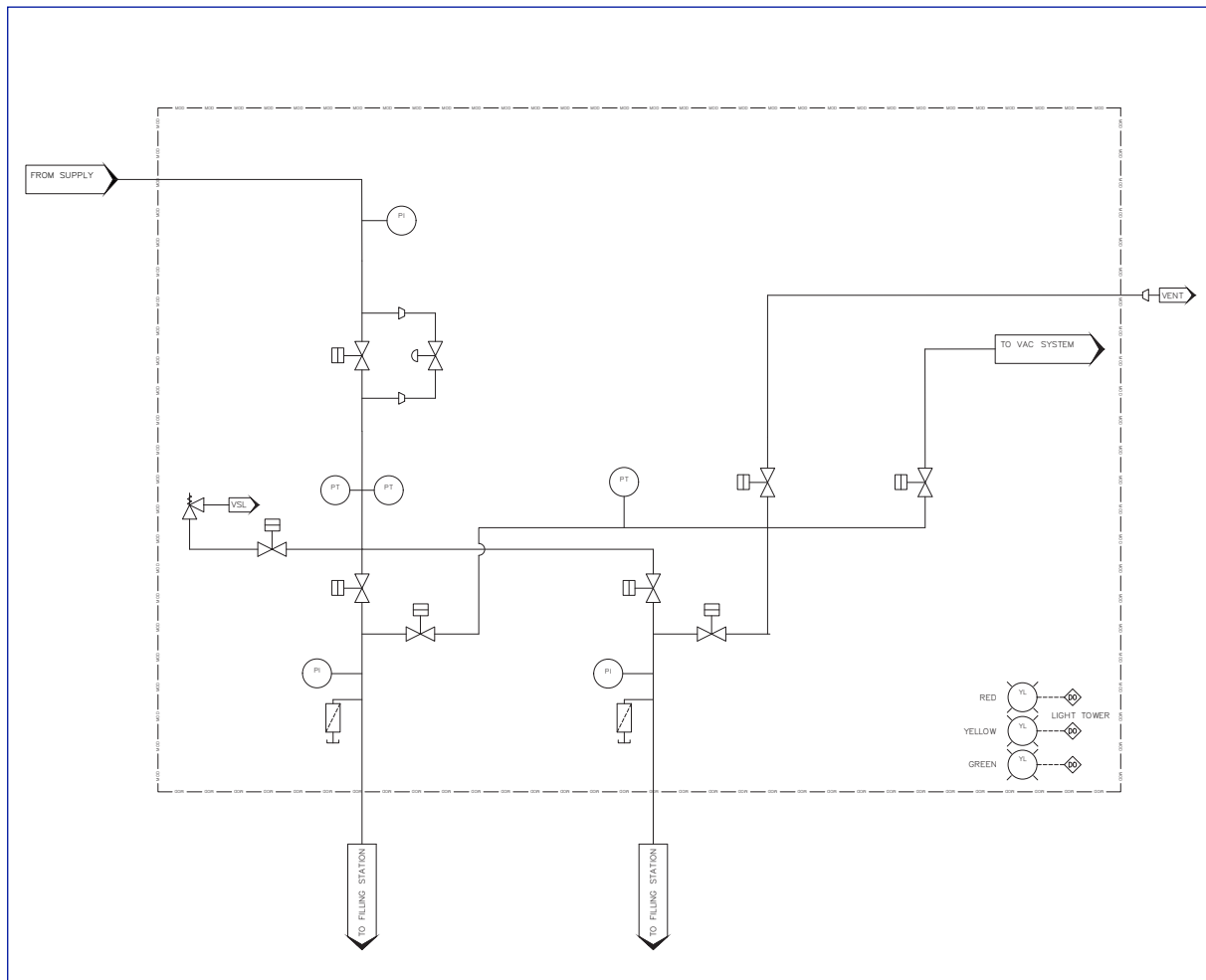


[www.krytem.com](http://www.krytem.com)



[www.m-tech-gmbh.com](http://www.m-tech-gmbh.com)

## Mono Gas Cylinder Filling Module



For further details please contact Ian Davies at [idavies@igph.net](mailto:idavies@igph.net) or visit our website at [www.igph.net](http://www.igph.net)



[www.aeroflex.co.uk](http://www.aeroflex.co.uk)



[www.filltech.de](http://www.filltech.de)



[www.igas-ts.com](http://www.igas-ts.com)



[www.krytem.com](http://www.krytem.com)



[www.m-tech-gmbh.com](http://www.m-tech-gmbh.com)